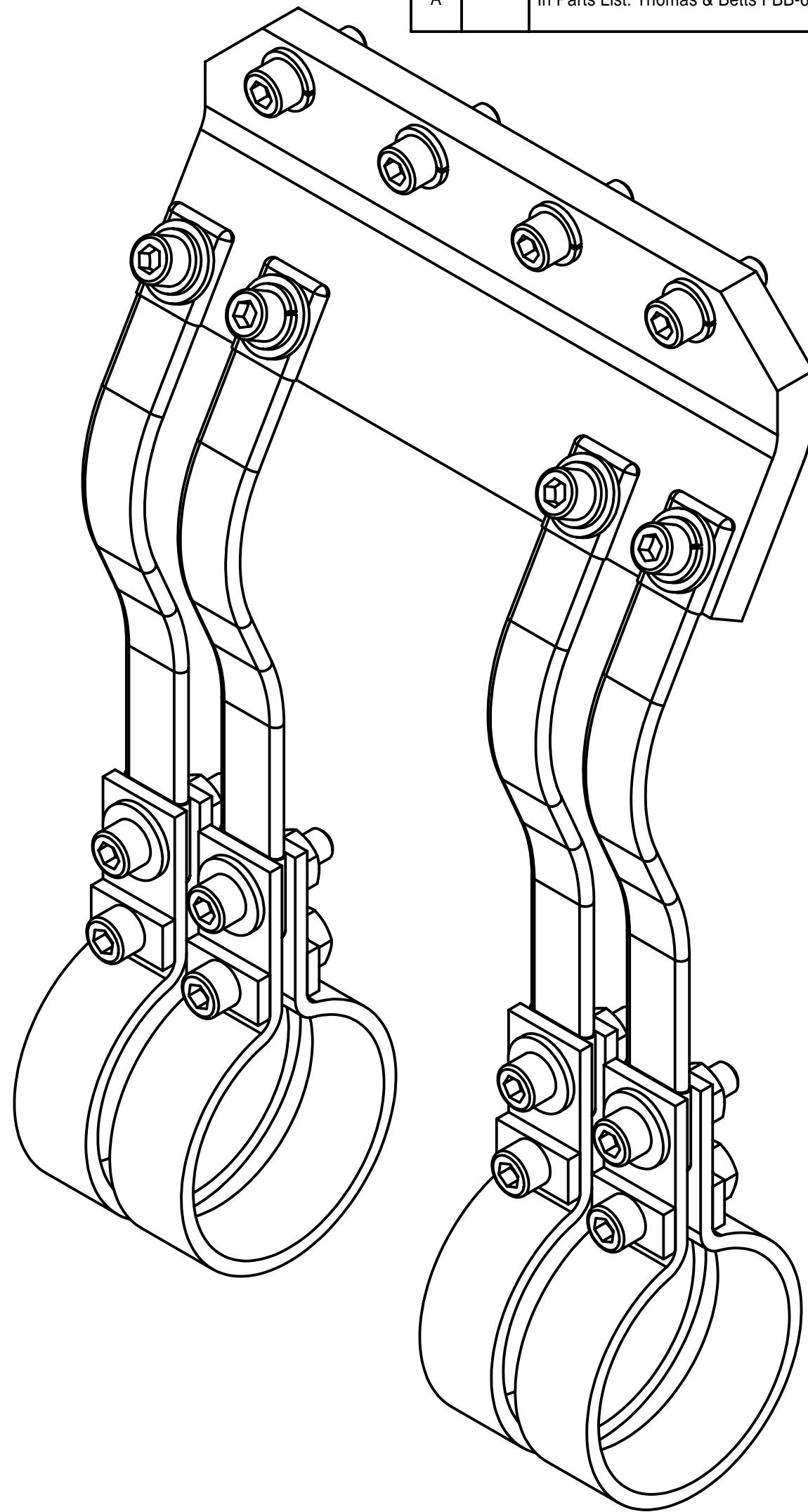
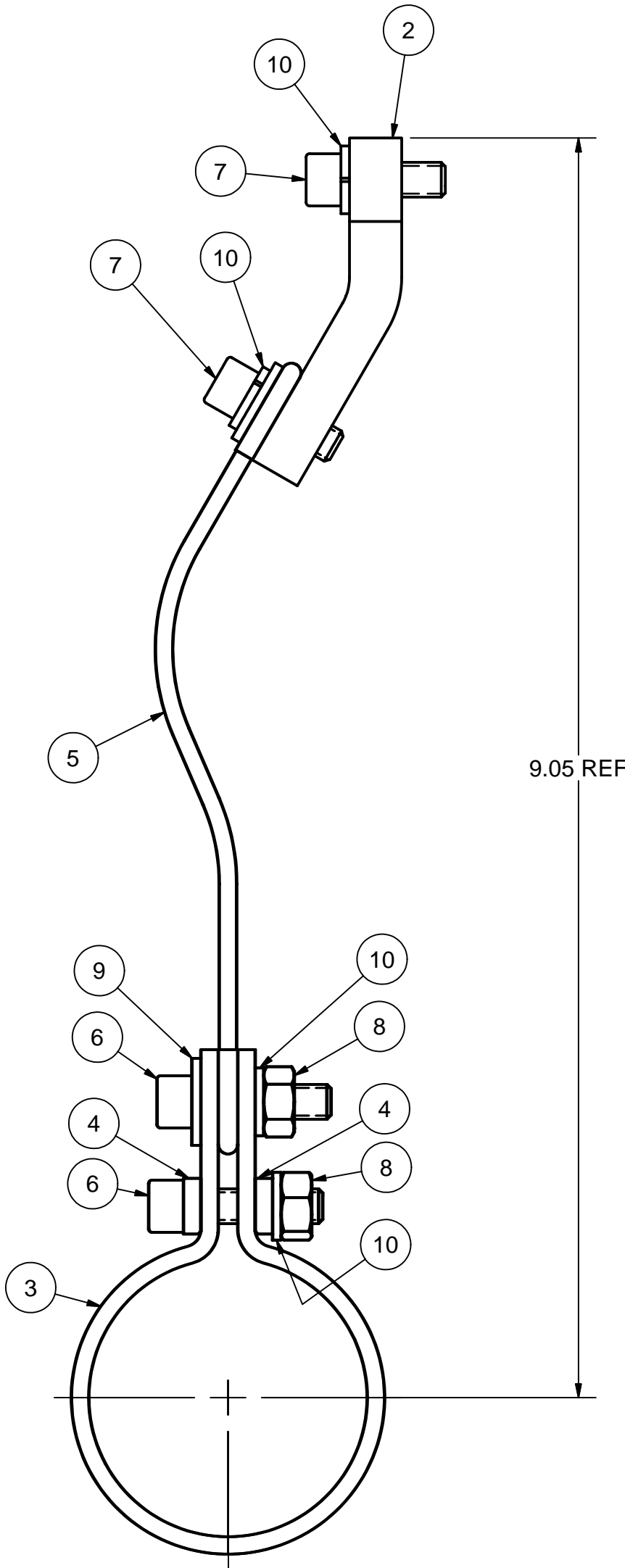
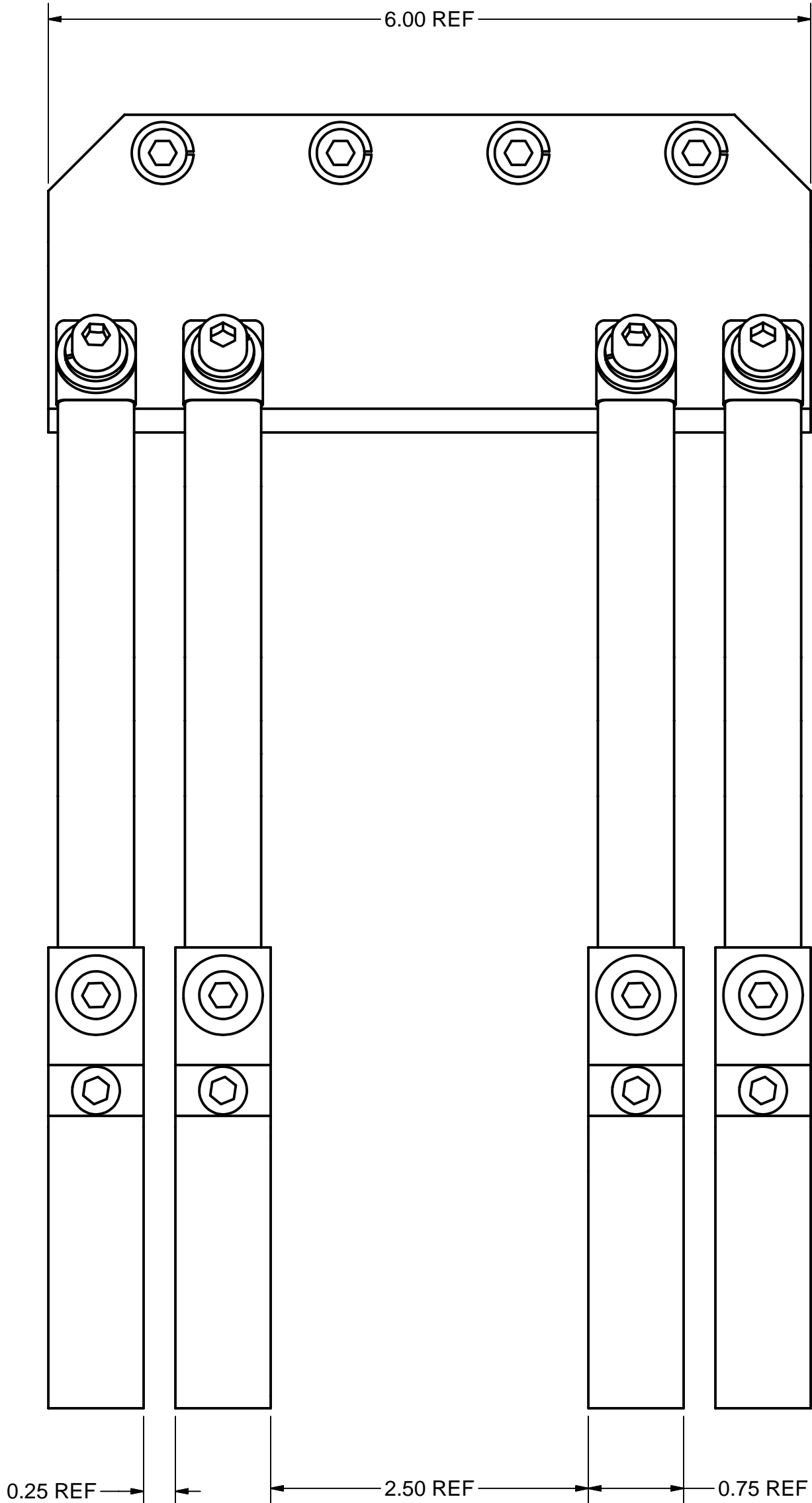


REVISIONS				
SYM.	ZONE	DESCRIPTION	DATE	APP.
A		In Parts List: Thomas & Betts FBB-6-1 was FBB-12-1	6/18/07	VM

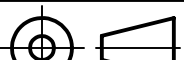
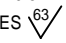



Release of final PO version for Meyer Tool - June 19, 2007.

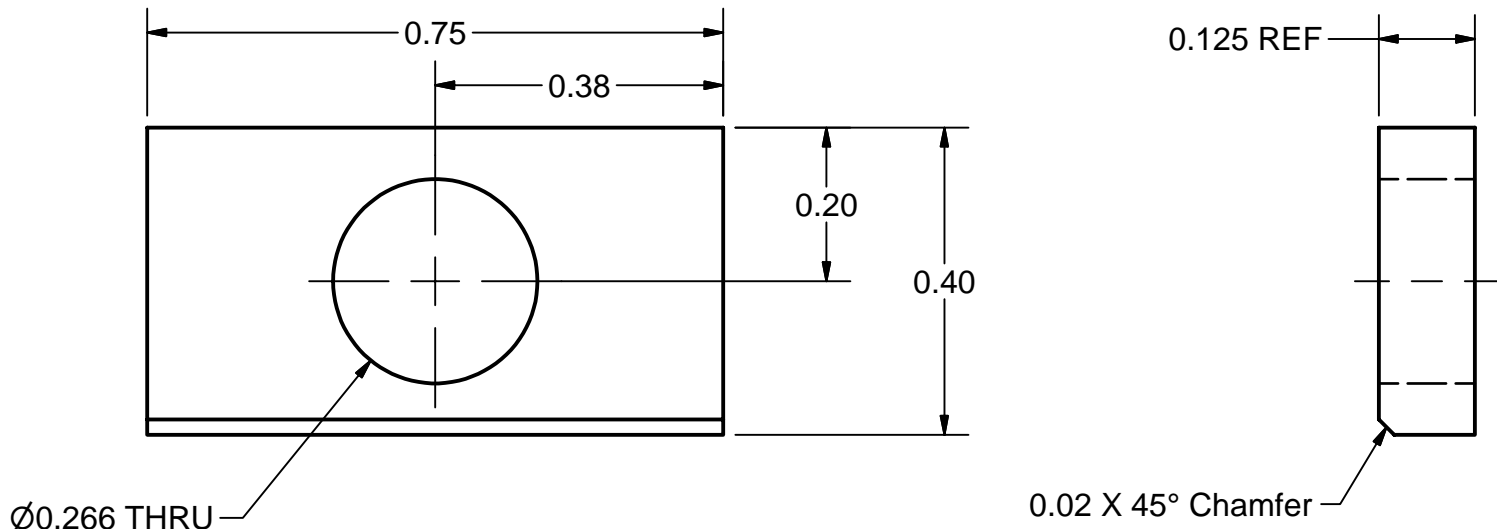
10	PUR.	1/4 Spring Lock Washer	16		316L ST. STEEL	
9	PUR.	1/4 Washer	8		316L ST. STEEL	
8	PUR.	1/4-20 Hex Nut	8		BRASS	
7	PUR.	1/4-20 x 3/4" SOCKET HEAD CAP SCREW	8		316L ST. STEEL	
6	PUR.	1/4-20 x 1 Socket Head Cap Screw	8		316L ST. STEEL	
5	-	0.14" x 0.63" x 6.0" FLEXIBLE BRAID	4		THOMAS & BETTS FBB-6-1	
4	7110-027 (SH. 2)	CLAMP SPACER	4			
3	7110-027 (SH. 2)	2" COPPER CLAMP	4			
2	7110-027 (SH. 2)	POST SUPPORT: 5K COOLING PLATE	1			
1	7110-027 (SH. 1)	SUPPORT POST 5K FLANGE COOLING ASSEMBLY	X			

1 SUPPORT POST 5K FLANGE COOLING ASSEMBLY  
FILE NAME: 7110-027  
SHEET NO.: 1  
DFT. SCALE: 1 : 1  
MATERIAL:  
QTY: 1 PER ASSEMBLY  
NOTES:

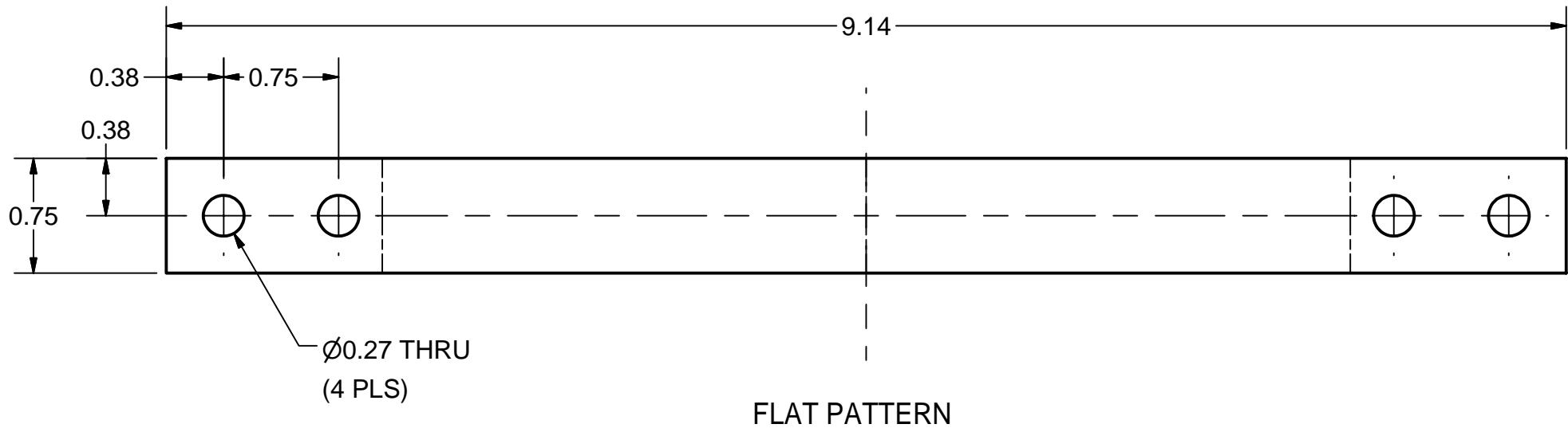
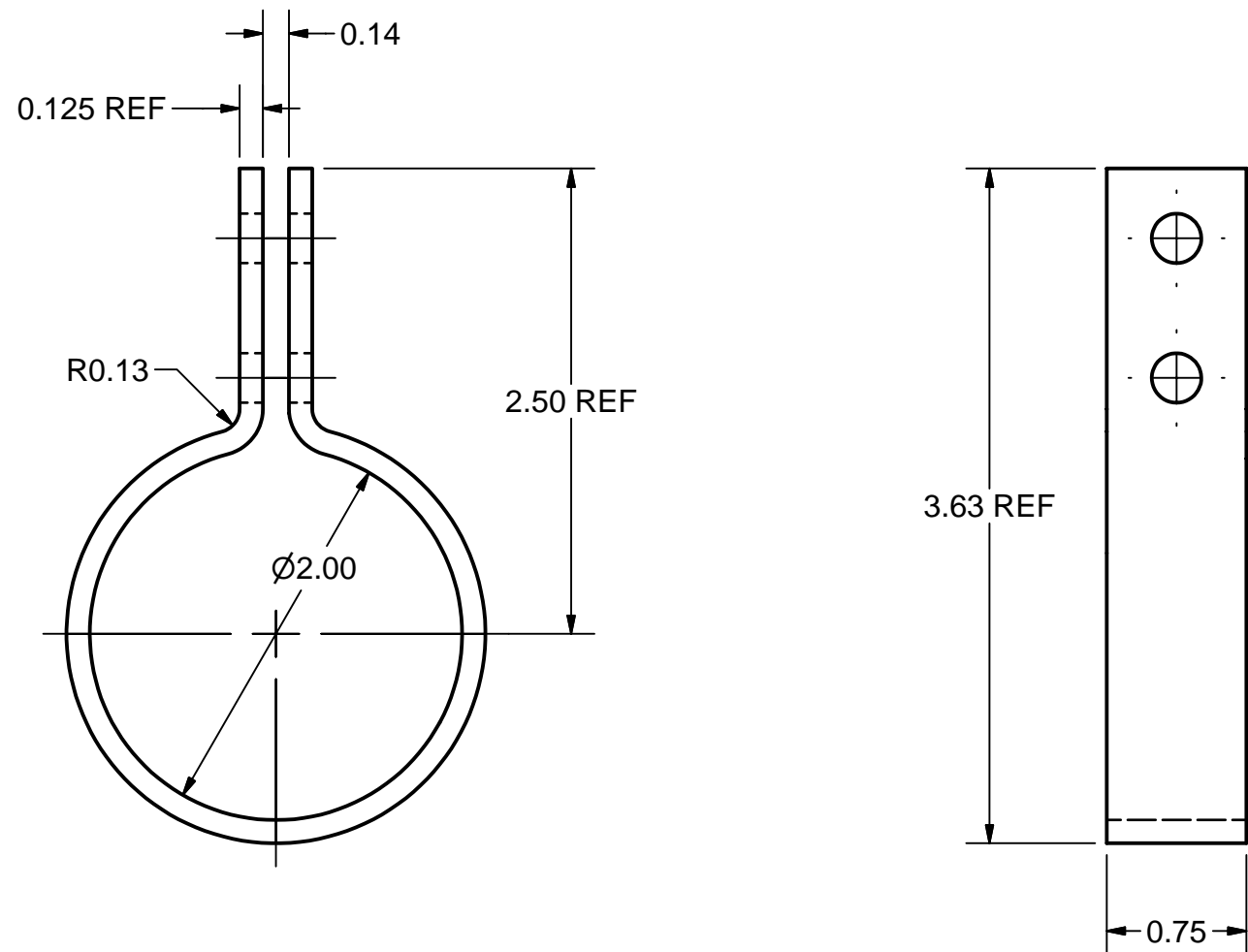
FOR MACHINING LUBRICANT USE ONLY  
ALKALINE DETERGENT LUBRICANT CIMSTAR 40  
OR EQUIVALENT APPROVED BY CORNELL LEPP

	ITEM	DWG. NO.	DESCRIPTION			G1	G2	G3	REMARKS	REV.
							QUANTITY			
D	PRINT DISTR.	PLOT DATE: 6/19/2007 CAD FILE NAME: 7110-027.idw								
7110-027 SH. NO. 1 OF 2	CR1	UNLESS OTHERWISE SPECIFIED:  DIMENSIONS ARE IN INCHES: TOLERANCES ON: .0 ± .02 .00 ± .010 .000 ± .005 FRACTIONS ± 1/32 ANGLES ± 0.5° ALL SURFACES 		CORNELL UNIVERSITY  CORNELL UNIVERSITY Floyd R. Newman Laboratory Ithaca, NY 14853  ERL HORIZONTAL TEST CRYOMODULE SUPPORT POST 5K FLANGE COOLING ASSEMBLY						
		CHECKED BY: V.M. APPROVED BY: M.L.		DRAWN BY applin	DRAWN FOR VM	DATE 8/28/2006	SCALE D	7110-027 SH. NO. 1 OF 2		REV. A

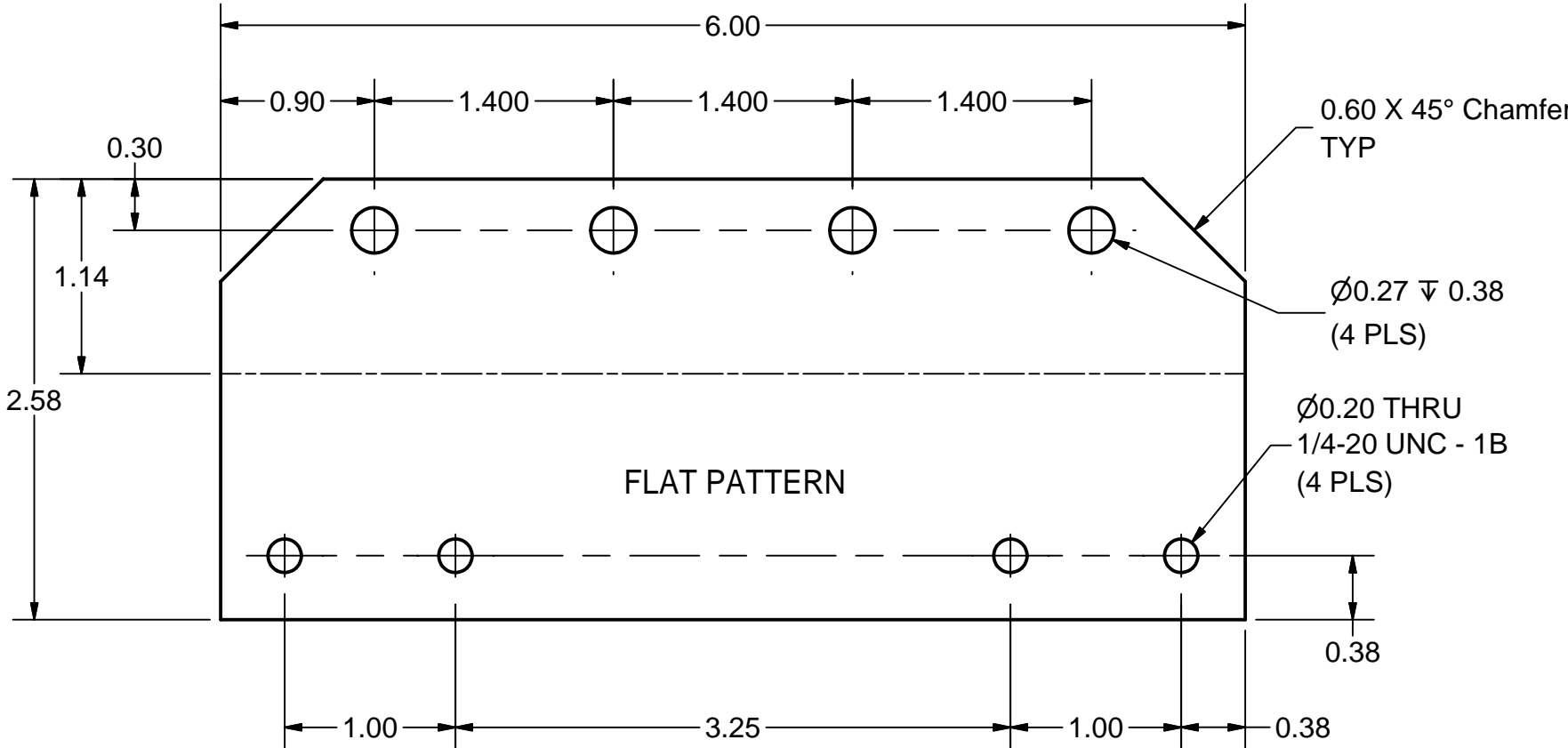
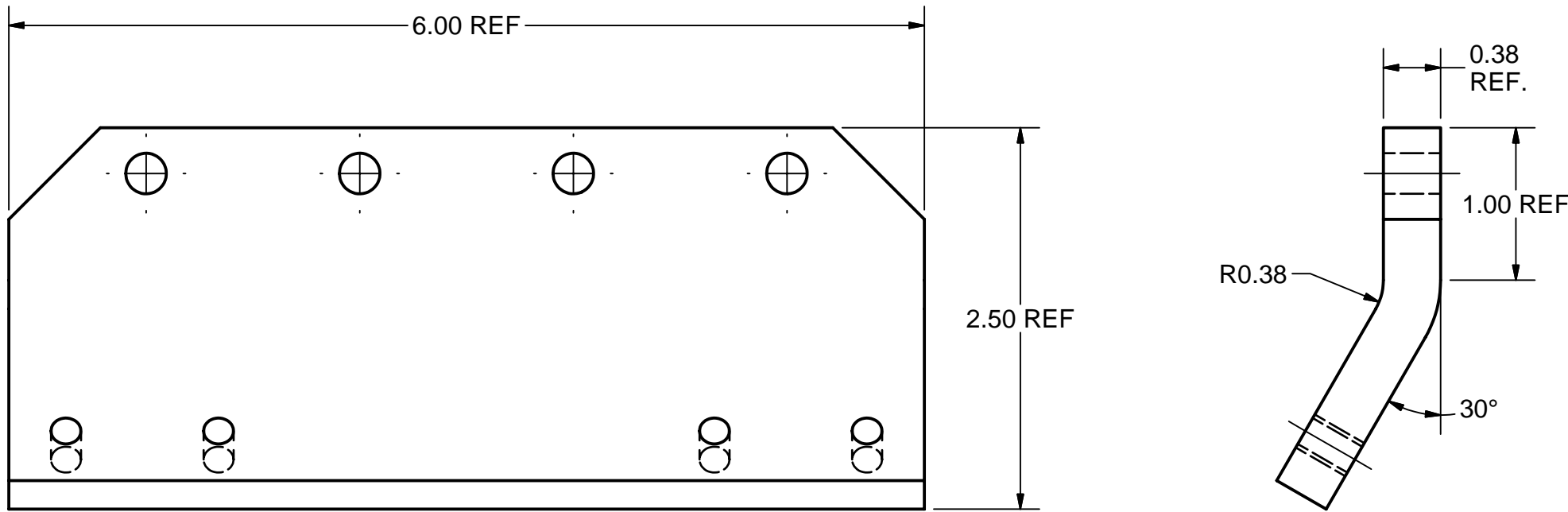
REVISIONS				
SYM.	ZONE	DESCRIPTION	DATE	APP.
A		Most of Dimensions Were 3-Digit.	6/18/07	VM



**4 CLAMP SPACER**  
FILE NAME: 7110-027  
SHEET NO.: 2  
DFT. SCALE: 4 : 1  
MATERIAL: 1/8" 316L STAINLESS STEEL SHEET  
QTY: 2 PER ASSEMBLY  
NOTES:



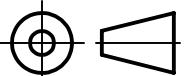




**3 2" COPPER CLAMP**  
FILE NAME: 7110-027  
SHEET NO.: 2  
DFT. SCALE: 1 : 1  
MATERIAL: 1/8" OFHC COPPER SHEET  
QTY: 1 PER ASSEMBLY  
NOTES:



**2 POST SUPPORT: 5K COOLING PLATE**  
FILE NAME: 7110-027  
SHEET NO.: 2  
DFT. SCALE: 1 : 1  
MATERIAL: 3/8" OFHC COPPER SHEET  
QTY: 1 PER ASSEMBLY  
NOTES:

Release of final PO version for Meyer Tool - June 19, 2007.

FOR MACHINING LUBRICANT USE ONLY  
ALKALINE DETERGENT LUBRICANT CIMSTAR 40  
OR EQUIVALENT APPROVED BY CORNELL LEPP

	ITEM	DWG. NO.	DESCRIPTION			G1	G2	G3	REMARKS	REV.
							QUANTITY			
	PRINT DISTR.	PLOT DATE: 6/19/2007 CAD FILE NAME: 7110-027.idw								
	7110-027 SH. NO. 2 OF 2	CR1	UNLESS OTHERWISE SPECIFIED:  DIMENSIONS ARE IN INCHES; TOLERANCES ON:  .0 ± .02 .00 ± .010 .000 ± .005 FRACTIONS ± 1/32 ANGLES ± 0.5° ALL SURFACES 	CORNELL UNIVERSITY  CORNELL UNIVERSITY Floyd R. Newman Laboratory Ithaca, NY 14853  LABORATORY FOR ELEMENTARY PARTICLE PHYSICS						
ERL HORIZONTAL TEST CRYOMODULE SUPPORT POST 5K FLANGE COOLING ASSEMBLY										
A				REV.	CHECKED BY: V.M.	DRAWN BY applin	DRAWN FOR VM	DATE 8/28/2006	SCALE	
	APPROVED BY: M.L.									